

# Device Modeling Report

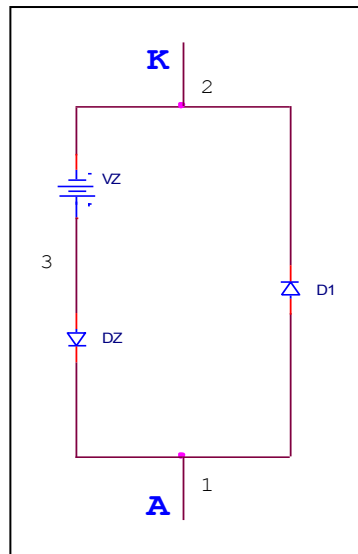
COMPONENTS: DIODE/ZENER DIODE/ STANDARD  
PART NUMBER: 02DZ5.6\_Z  
MANUFACTURER: TOSHIBA



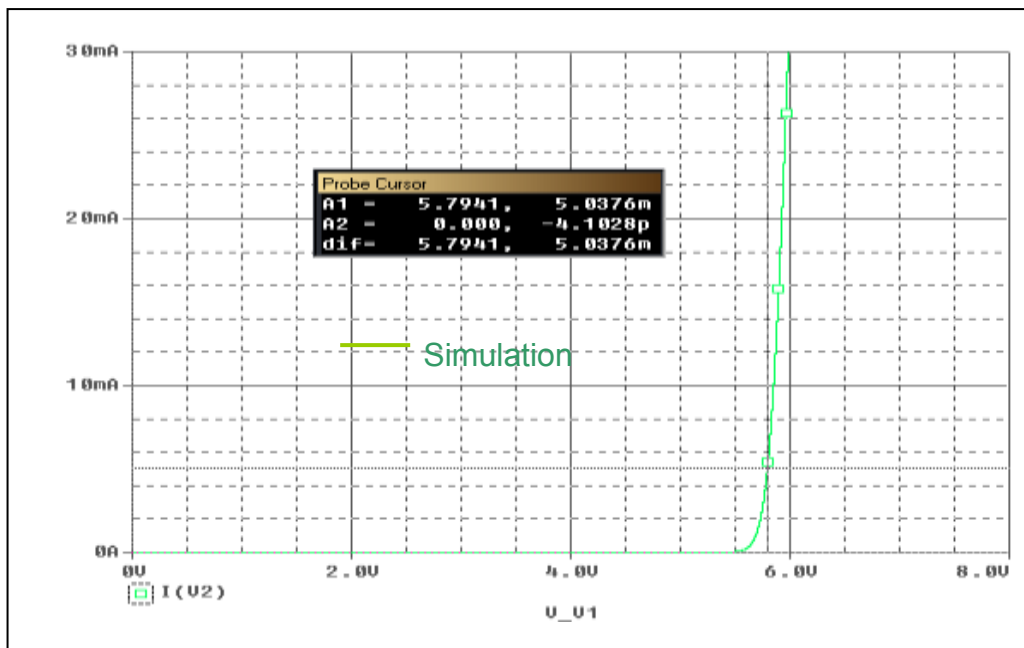
**Bee Technologies Inc.**

Pspice model parameter	Model description
IS	Saturation Current
N	Emission Coefficient
RS	Series Resistance
CJO	Zero-bias Junction Capacitance
M	Junction Grading Coefficient
VJ	Junction Potential
ISR	Recombination Current Saturation Value
TT	Transit Time

## Equivalent circuit



## Iz(Zener Current) vs. Vz(Zener Voltage) Characteristics



## Simulation Result

	Datasheet	Simulation	% Error
VZ(V)	5.61-6.00	5.7941	0
IZ(A)	5m	5.0376m	0.752