

Device Modeling Report

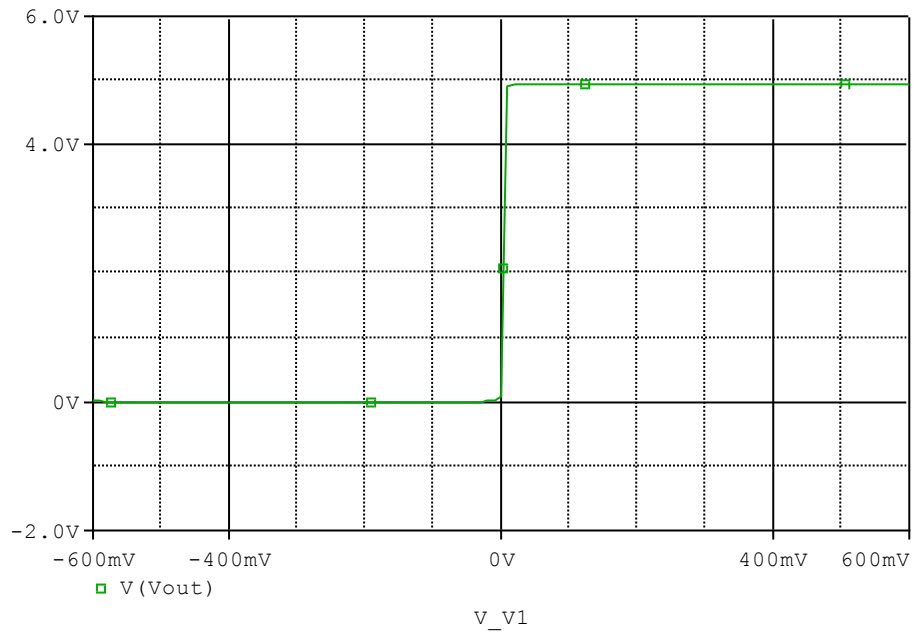
COMPONENTS:MOSFET: OPERATIONAL AMPLIFIER
PART NUMBER:NJM2737
MANUFACTURER: NEW JAPAN RADIO CO.,LTD



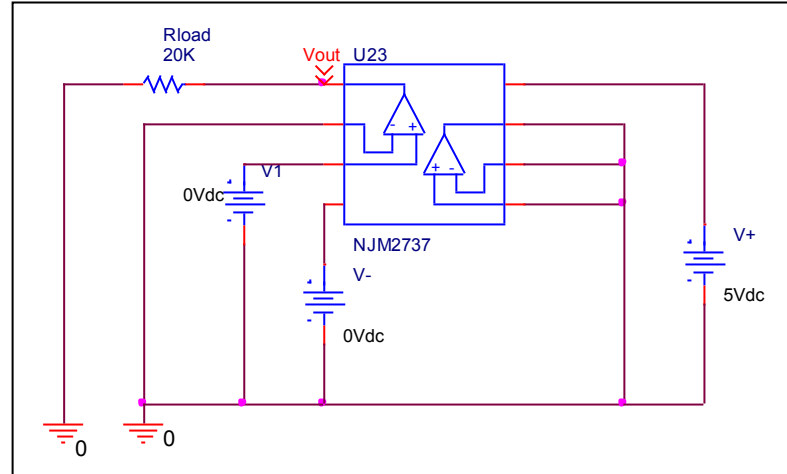
Bee Technologies Inc.

Output Voltage Swing

Simulation result



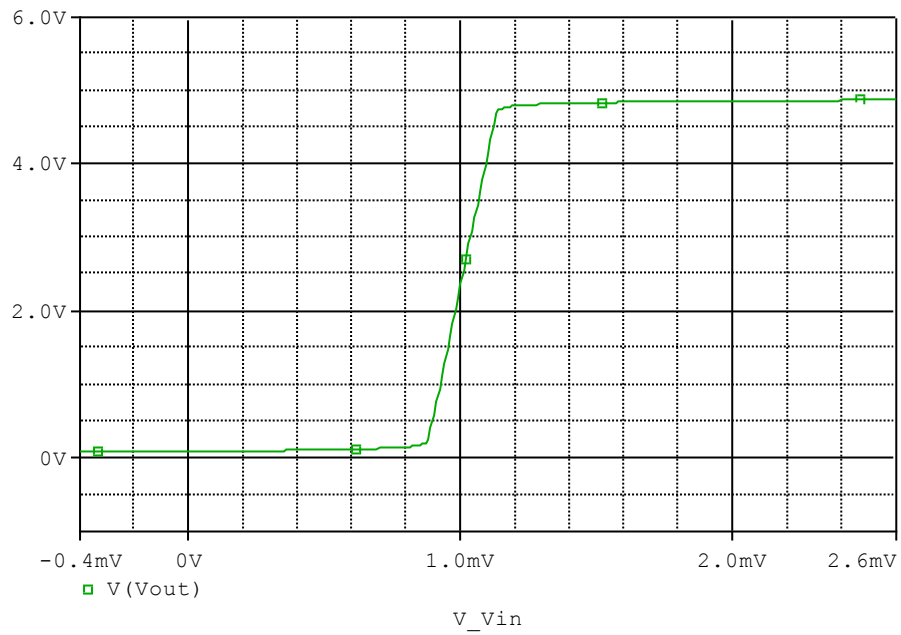
Evaluation circuit



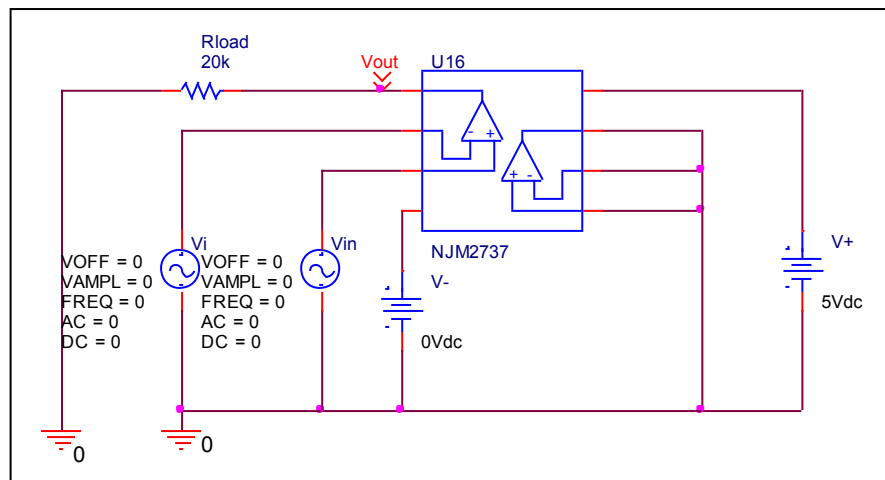
Output Voltage Swing	Data sheet	Simulation	%Error
V _{OH} (V)	4.950	4.950	0.000

Input Offset Voltage

Simulation result



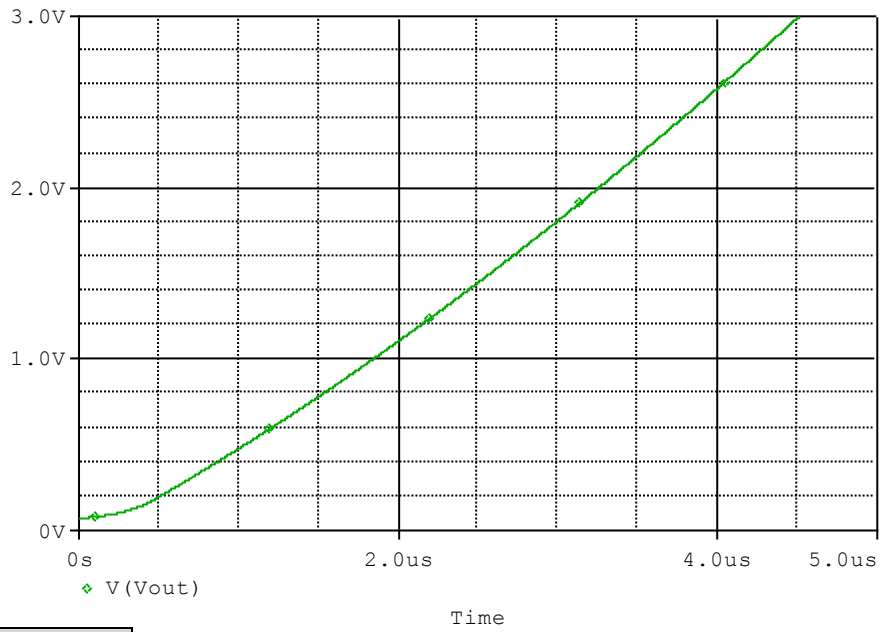
Evaluation circuit



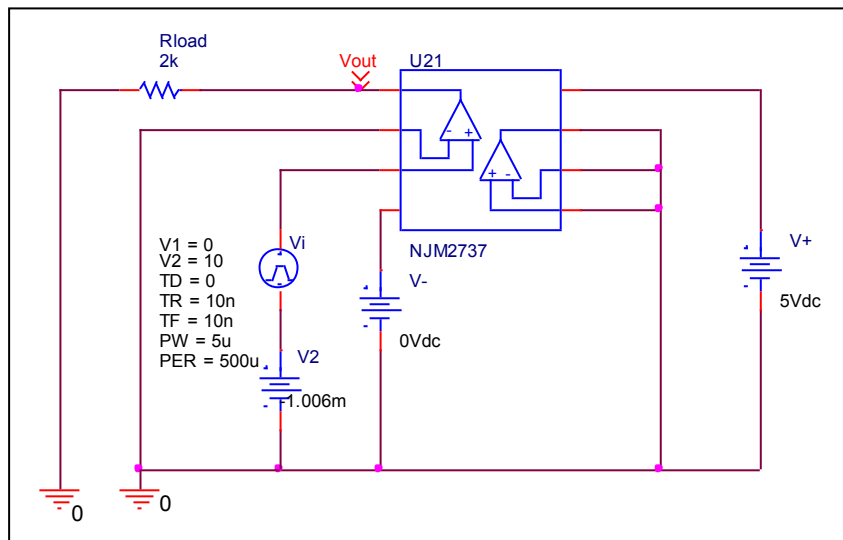
Vos	Measurement		Simulation		Error	
	1.000	mV	1.006	mV	0.600	%

Slew Rate

Simulation result



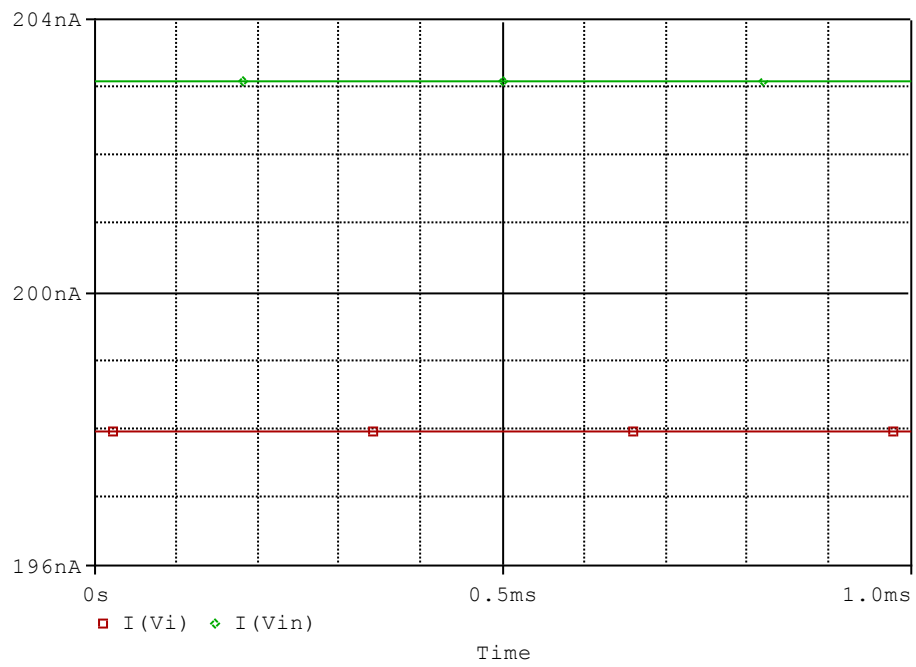
Evaluation circuit



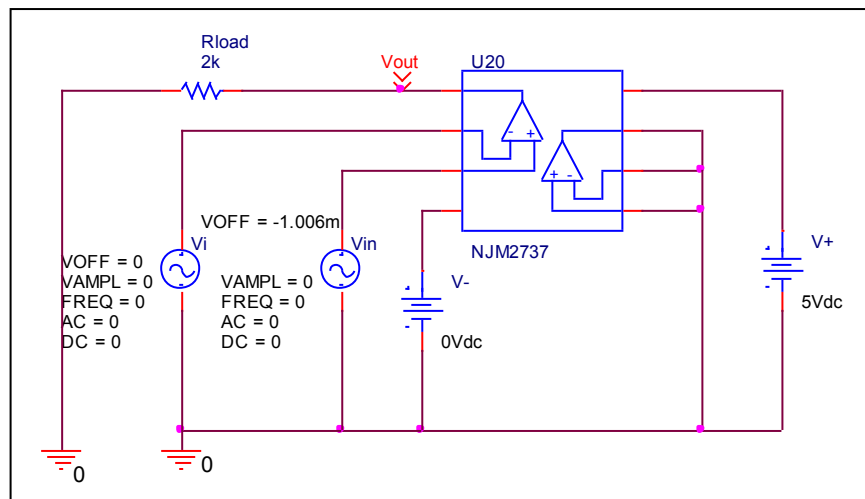
Slew Rate(v/us)	Data sheet	Simulation	%Error
		0.700V/us	0.703V/us

Input current

Simulation result



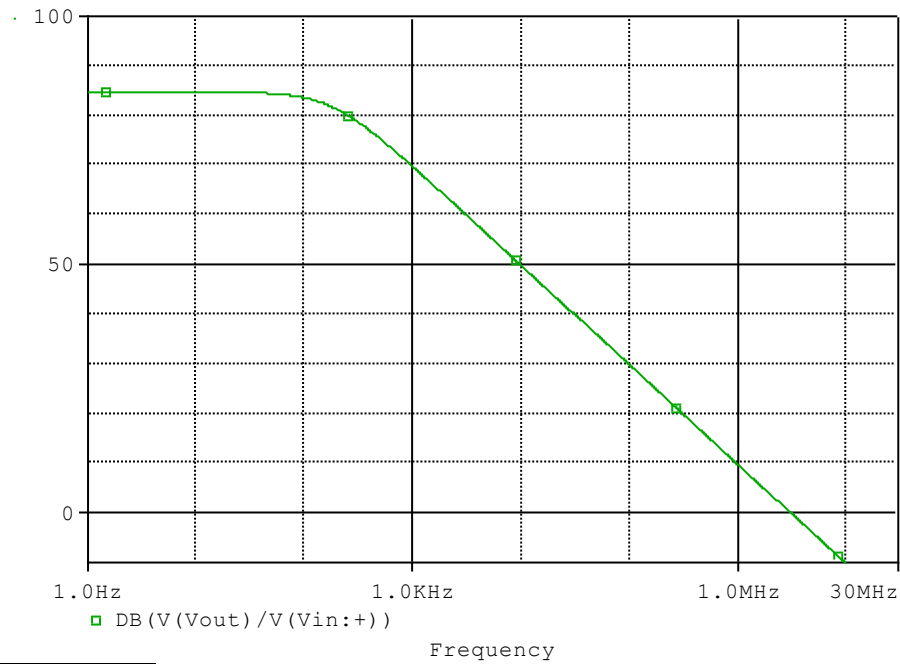
Evaluation circuit



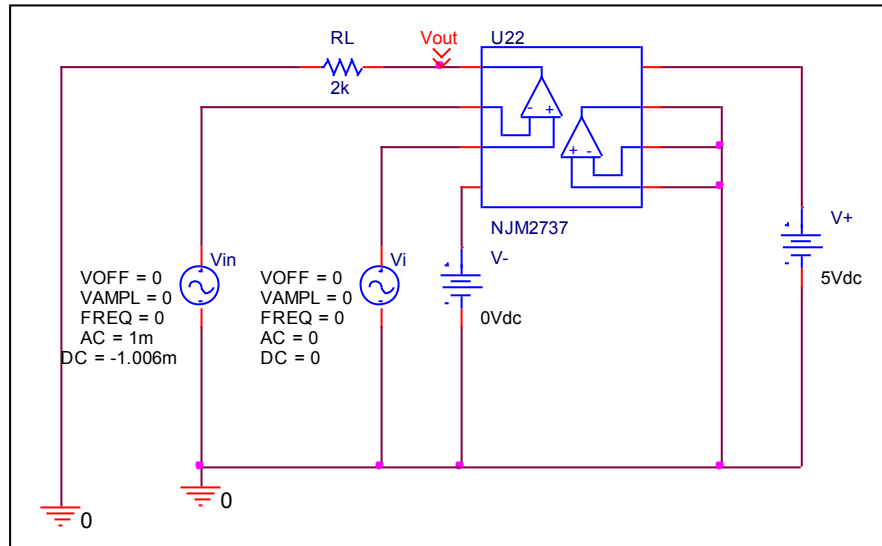
	Data sheet	Simulation	%Error
I_b(nA)	200.000	200.532	0.266
I_{bos}(nA)	5.000	5.143	2.860

Open Loop Voltage Gain vs. Frequency

Simulation result



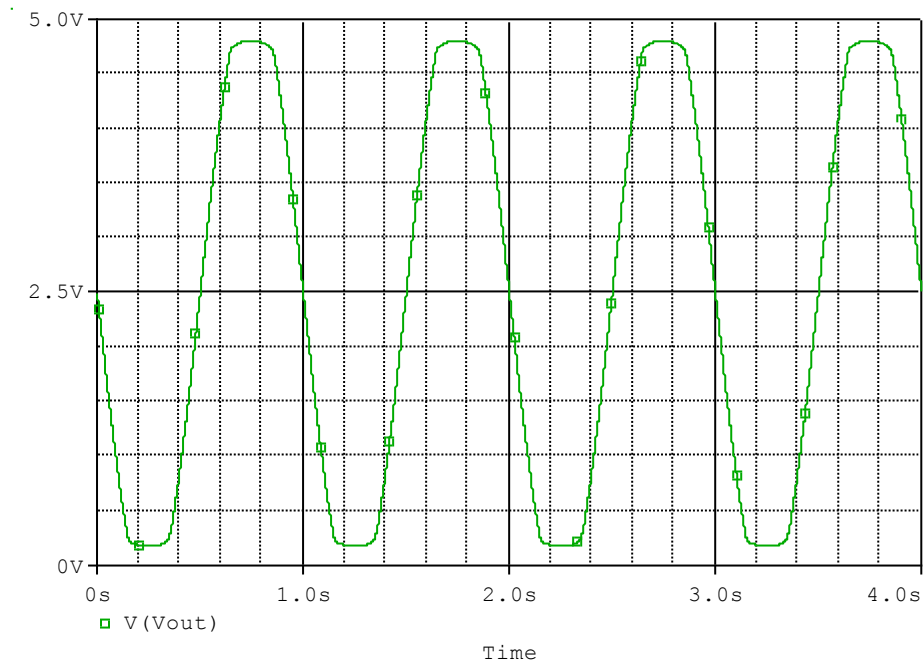
Evaluation circuit



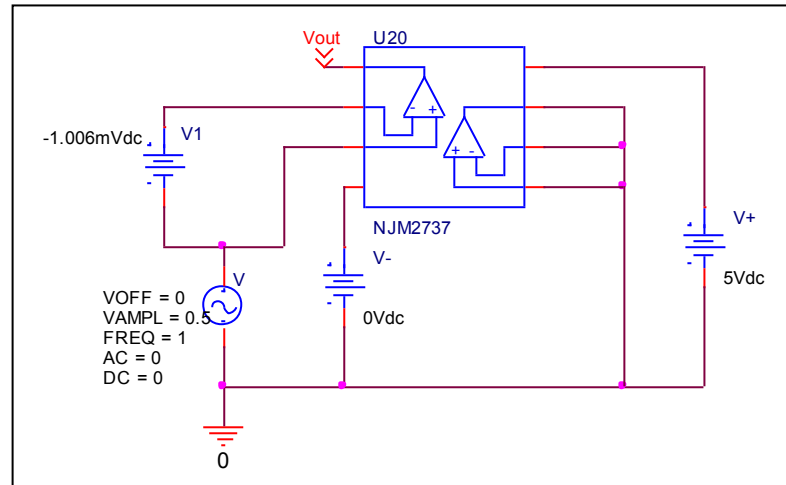
	Data sheet	Simulation	%Error
f-0dB(MHz)	3.100	3.044	-1.806
Av-dc(dB)	85.000	84.761	-0.281

Common-Mode Rejection Voltage gain

Simulation result



Evaluation circuit



Common Mode Reject Ratio= $17300.155/4.626=3739.765$

CMRR	Data sheet	Simulation	%Error
		70.000	71.456